

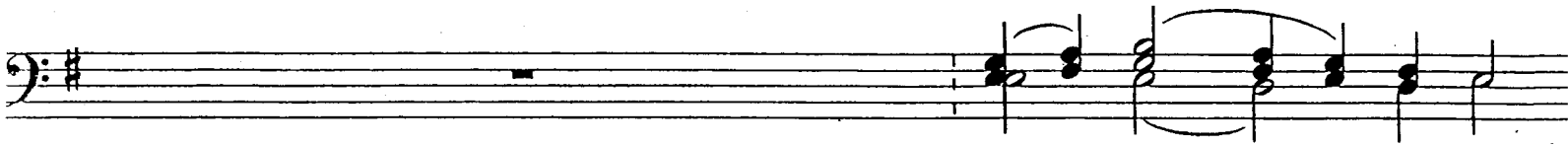
Nativity of our Lord - Litia - Tone One

TRIO

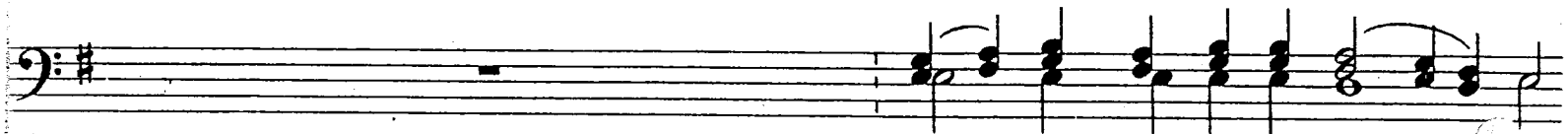
"Bulgarian" Chant



Hea - ven and earth — are u - ni - ted to - day. for — Christ — is born. -



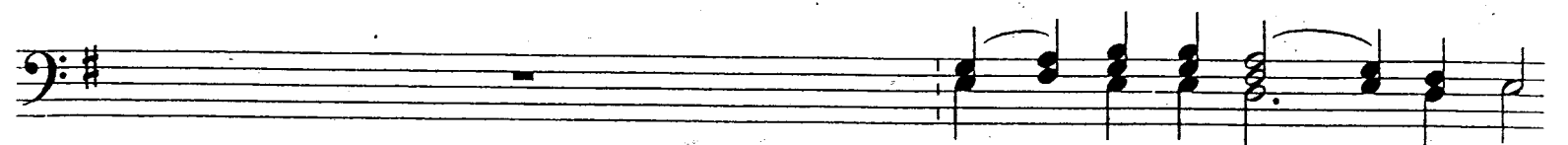
To - day has God — come u - pon — earth, and — man gone up to hea - ven.



To - day for man's — sake is seen in the flesh He who by na - ture is in - vis - i - ble.



There - fore let us al - so give glo - ry and — cry a loud — to Him



Nativity of our Lord - Litia - pg. 2

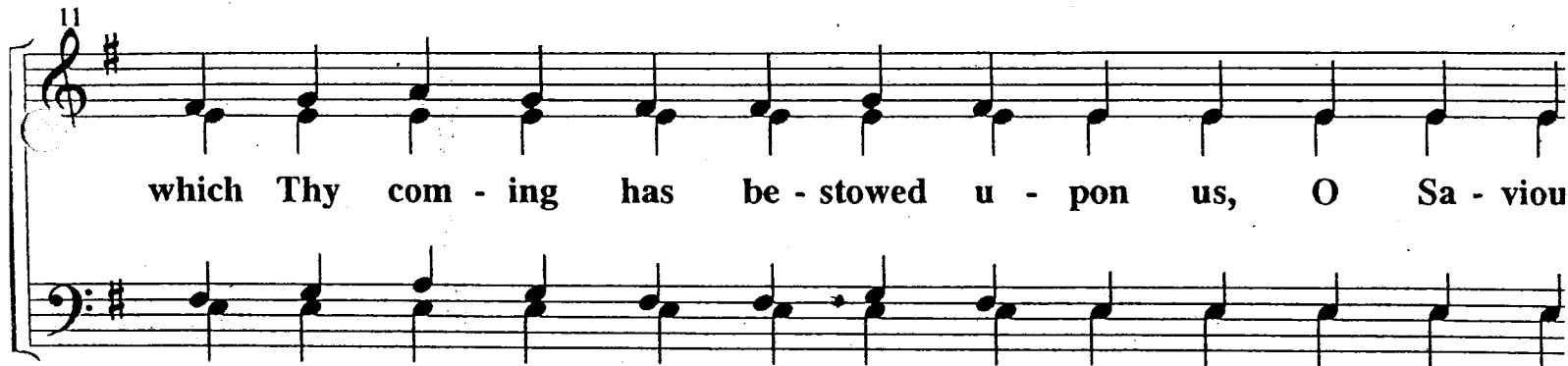
9



Glo - ry to God— in the high - est and— on earth— peace

Detailed description: This system contains measures 9 and 10. It features a treble clef with a key signature of one sharp (F#) and a common time signature. The melody in the treble clef consists of quarter and eighth notes, with a long horizontal line under the word 'highest' indicating a sustained note. The bass clef provides a harmonic accompaniment with chords and single notes.

11



which Thy com - ing has be - stowed u - pon us, O Sa - viou

Detailed description: This system contains measures 11 and 12. It features a treble clef with a key signature of one sharp (F#) and a common time signature. The melody in the treble clef consists of quarter notes. The bass clef provides a harmonic accompaniment with chords and single notes.

12



Glo - - - - ry to Thee!

Detailed description: This system contains measures 13 and 14. It features a treble clef with a key signature of one sharp (F#) and a common time signature. The melody in the treble clef consists of quarter notes, with a long horizontal line under the word 'Glo' indicating a sustained note. The bass clef provides a harmonic accompaniment with chords and single notes.